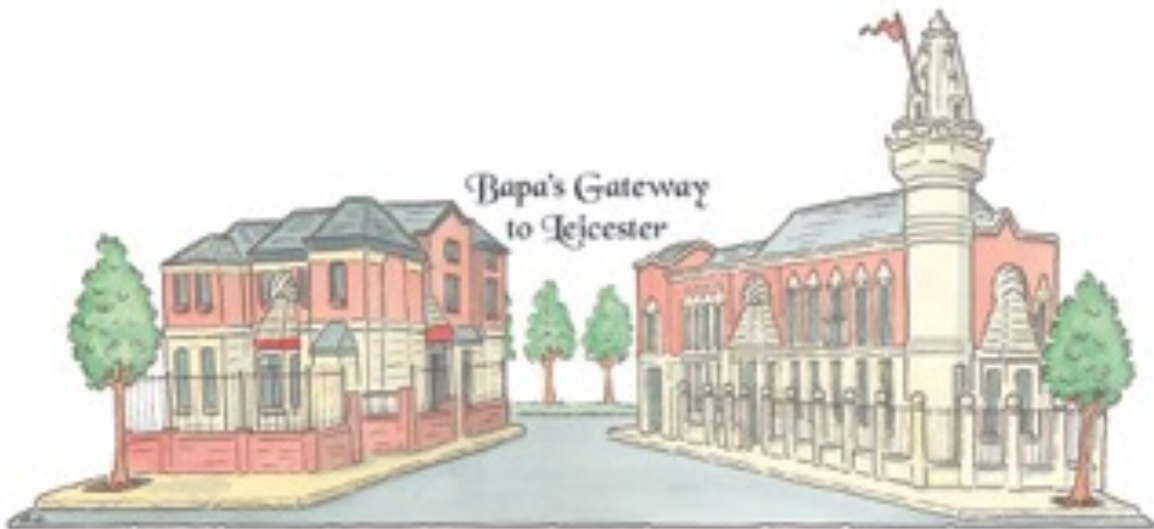


Shree Jalaram Charitable Trust UK

Press Release



JALARAM MANDIR OPENS DOORS FOR THE HOMELESS



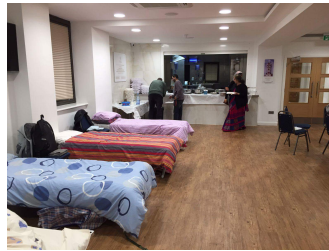
85 NARBOROUGH ROAD

LEICESTER, LE3 0LF

JALARAM MANDIR IN LEICESTER OPENS DOORS FOR THE HOMELESS

DURING WINTER MONTHS AND SUPPORTS LOCAL MULTI FAITH CHARITY

Following the success of the Leicester Winter Night Shelter Programme in 2016, Jalaram Mandir in Leicester is once again opening its doors to provide a winter night shelter for the homeless. The Leicester Winter Night Shelter project is managed by One Roof Leicester who has teamed up with seven faith organisations, including Jalaram Mandir, to offer shelter and hospitality to people who would otherwise be sleeping rough. The shelter will operate for 11 weeks. Each of the seven faith venues taking part in the scheme will operate as a shelter one night per week providing food, support and a place to sleep for 10 guests. Jalaram Mandir will host the shelter at its newly opened Jalaram Community Centre every Wednesdays between 6pm to 9am the following morning. Over 200 volunteers including those from Jalaram Mandir have been trained in providing hospitality, support and first aid to vulnerable people.



Leicester is one of the most diverse cities outside London and according to One Roof Leicester the number of known rough sleepers in Leicester is rising year on year. The ethos of the project is to bring people from all walks of life together and service users are referred to as “Guests” with the principle of ***Atithi Devo Bhavo***. Guests are welcomed with respect, warmth and care. Volunteers at the Jalaram Community Centre cook vegetarian meals on site and sit with the guests to have a meal and play games like a one big family. The coming together of Faith Organisations to provide a Winter Night Shelter Programme was highly commended by the Archbishop of Canterbury during his recent three day visit to Leicester.



Sunil Buddheo Trustee and Co-ordinator for the winter beds programme said, *“Once again, we are immensely honoured to host a night shelter at the Jalaram Community Centre. This is a vital need of our local community and I encourage other Hindu Temples and organisations across the country to come forward and do the same”*. Pramodbhai Thakkar, Chairman of Jalaram Mandir, stated that *“We have the state of the art facilities at the Centre and all our volunteers are immersed in providing warmth and care to all our guests and the centre is dedicated to cater for the whole community.”*

The Leicester Winter Beds project co-ordinator commented that last year *“the guests and volunteers at Jalaram Mandir were all amazing and it felt like a real celebration at the Jalaram Mandir on Wednesday nights as the first Hindu Temple in the UK to be part of a night shelter. The current programme will run up to 25th February 2017, but there are plans to work with faith organisations like Jalaram Mandir to find a lasting solution for all our guests”*.

Anyone wishing to contribute or volunteer can contact Jalaram Mandir.

CONTACT DETAILS



Shree
Jalaram
Temple & Community Centre
Leicester

85 NARBOROUGH ROAD

LEICESTER, LE3 0LF

TEL: 0116 254 0117



info@jalarambapa.com

Website: jalarambapa.com



Jalaram Prarthna Mandal Leicester

ENQUIRIES:

Ash Lodhia, Secretary

Mobile: 07891507579

TRUSTEE & WINTER BEDS CO-ORDINATOR

Sunil Buddheo

Mobile: 07803199090

CHAIRMAN:

Mr Pramod Thakkar